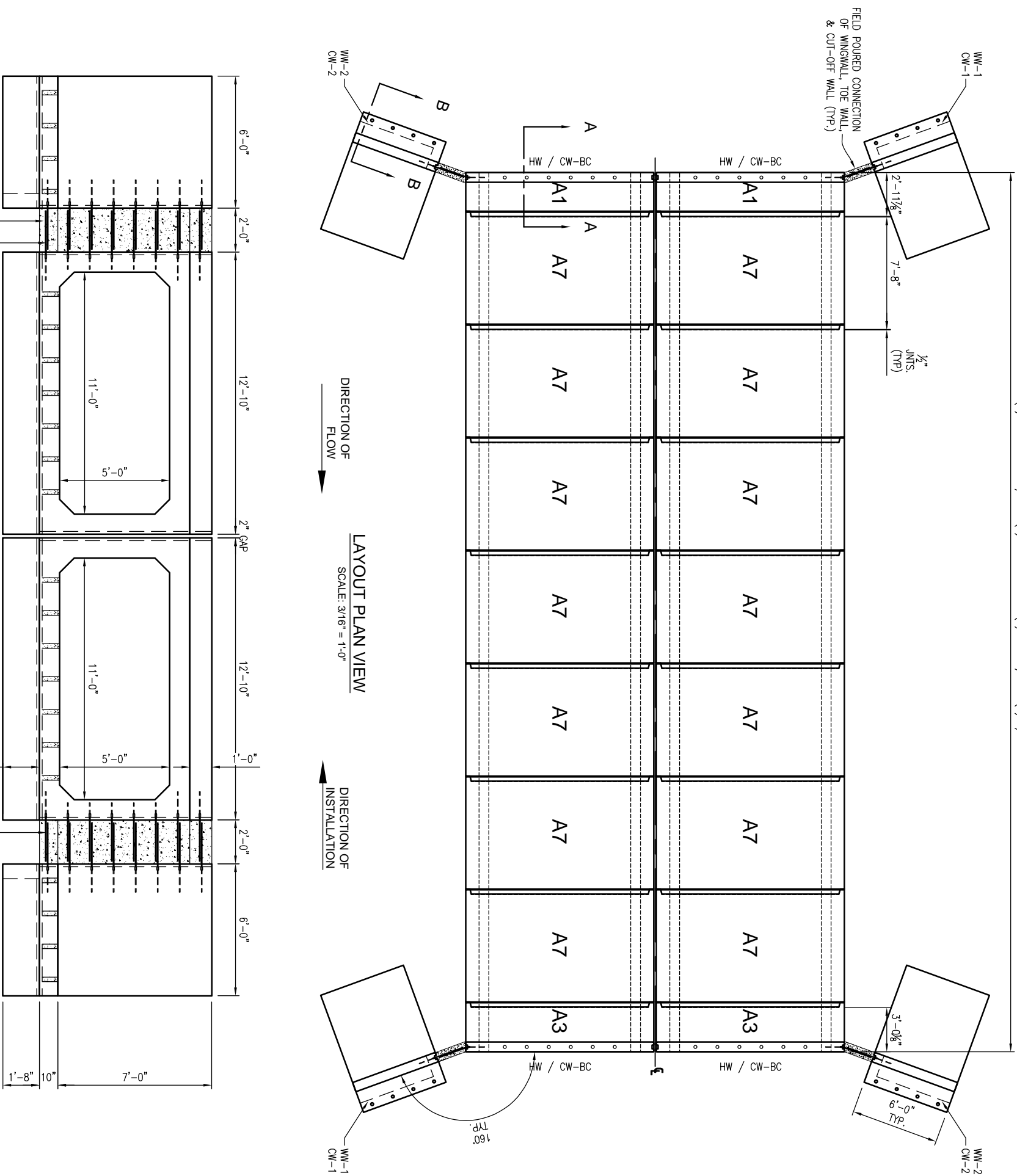


(1) A1 @ 2'-11 7/8" + (7) A7 @ 7'-8" + (1) 3'-0 1/8" + (8) 1/2" JNTS. = 60'-0"



DESIGN NOTES:

1. DESIGN LOADING
 - 1.1 ASHTO LRFD HL-93
 - 1.2 SOIL WEIGHT = 120 PCF
 - 1.3 DEPTH OF OVERBURDEN = 1' MIN. - 5' MAX
 - 1.4 LATERAL SOIL PRESSURE = 60 PCF
 - 1.5 LIVE LOAD SURCHARGE = ASHTO LRFD
- 1.6 DESIGN PER ASHTO LRFD BRIDGE DESIGN SPECIFICATION
- 1.7 ASSUMED FACTORED BEARING RESISTANCE = 5,000 PCF
2. f'_c = 5,500 PSI
3. WELDED WIRE FABRIC = PER ASTM A185 OR A497
4. CEMENT = ASTM C-150
5. ENVIRONMENTAL CLASS = MODERATELY AGGRESSIVE
6. CULVERT DESIGN MEETS OR EXCEEDS REQUIREMENTS PER FDOT STANDARD INDEX 291

NOTES TO CONTRACTOR:

THE CONTRACTOR SHALL BE RESPONSIBLE FOR PROPER COORDINATION TO ENSURE THAT AN ADEQUATE BEARING SURFACE IS PROVIDED (I.E. LEVEL AND COMPACTED) PER PROJECT SPECIFICATIONS.

NO HEAVY EQUIPMENT/CONSTRUCTION LOADS SHALL BE APPLIED DIRECTLY ONTO PRECAST STRUCTURE. CONTRACTOR SHALL NOT APPLY ANY LOADS ON PRECAST STRUCTURE WITHOUT PROPER DESIGN FILL.

IF REQUIRED, CONTRACTOR SHALL PROVIDE LINK SLAB (DESIGNED, PROVIDED AND INSTALLED BY OTHERS) PER FDOT INDEX 291 & 292

THREADED SPICE BARS TO BE LEFT AROUND PERIMETER OF INLET OPENINGS FOR CAST-IN-PLACE INLET PER DETAIL A SHEET NO 132.

PRODUCT WEIGHTS

PRODUCT	QTY	BASE WEIGHT	LENGTH
11x5 BC			
A1	2	15,111#	2'-11 7/8"
A7	14	38,834#	7'-8"
A3	2	15,111#	3'-0 1/8"
HW	2	1,246#	12'-10"
WW-1	2	10,214#	6'-0"
WW-2	2	10,214#	6'-0"
CW-9C	4	3,108#	12'-10"
CW-1	2	1,841#	6'-0"
CW-2	2	1,841#	6'-0"



7400 Paradise Road, Cape Coral, FL 33909
PHONE: 239-338-9000

THIS DOCUMENT IS THE PROPERTY OF OLDCASTLE PRECAST, INC. ITS SUBMITTAL FOR MEMBERSHIP OF SAID COMPANY. IT AND SHALL NOT BE LOANED, REPRODUCED, COPIED, OR IN ANY MANNER DISSEMINATED TO THE PUBLIC.

11' X 5' STANDARD BOX CULVERT

EMERGENCY ROAD REPAIR

IMMOKALEE FARM WORKERS VILLAGE

DATE	SALES	DRAWN	ENGINEER	CHECKED	SALES ORDER
10/10/17	MM	MC	JG	—	112355
	DRAWING NUMBER			REVISION	SHEET
	11x5 STD BC			1 OF	3